

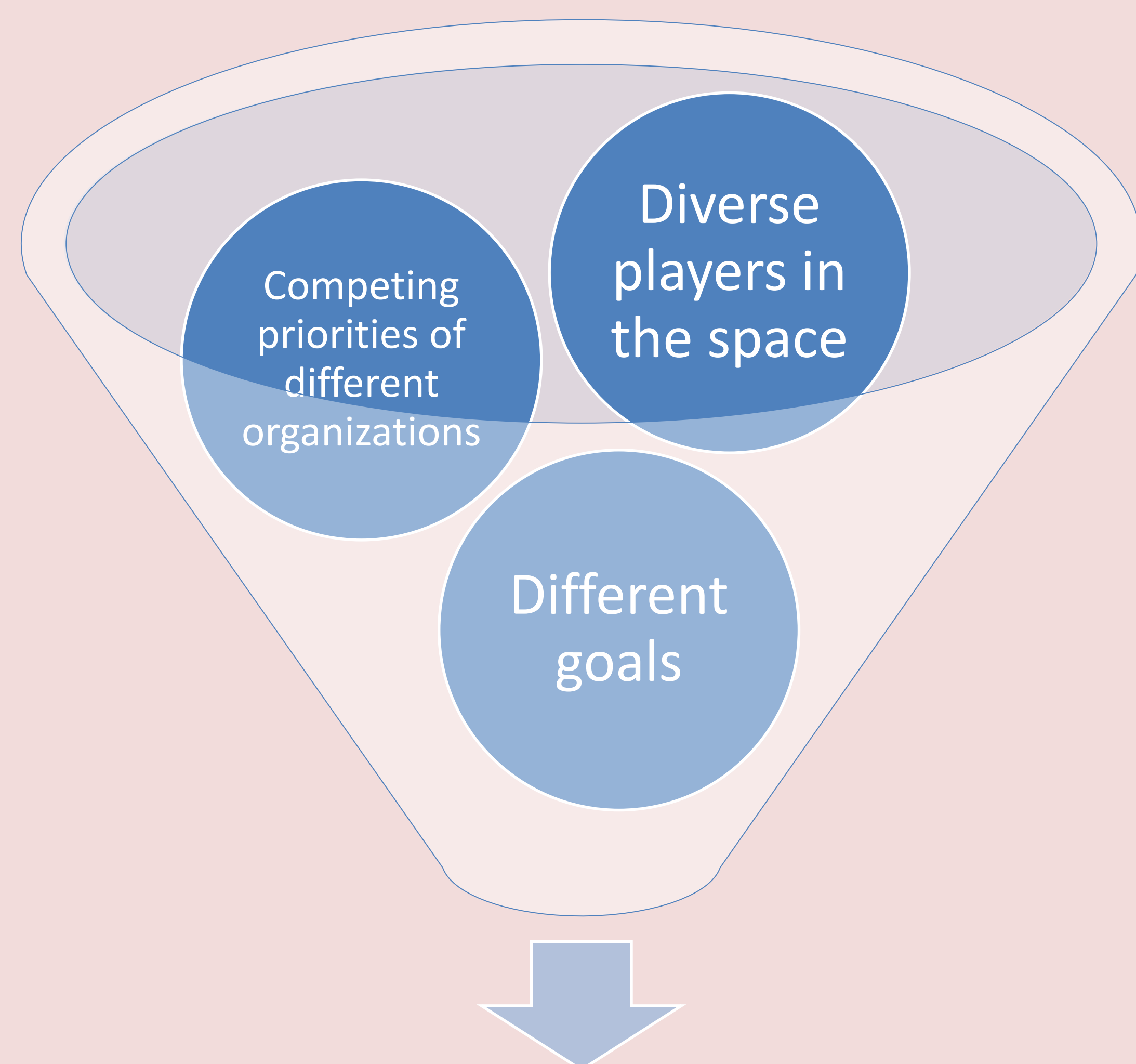
CIPCOH

The Center for Integration of Primary Care and Oral Health (CIPCOH) serves as a national resource for systems-level research on oral health integration into primary care training with special emphasis on training enhancements that will train primary care providers to deliver high quality, cost-effective, patient-centered care that promotes oral health, addresses oral health disparities and meets the unique needs of all communities.

CIPCOH will contribute to the improvement of primary care practice and patient outcomes through:

- Conducting systems-level research on primary care training
- Disseminating information, best practices and resources
- **Developing community of practice plans that mobilize stakeholders to integrate oral health into primary care training and delivery.**

Challenges

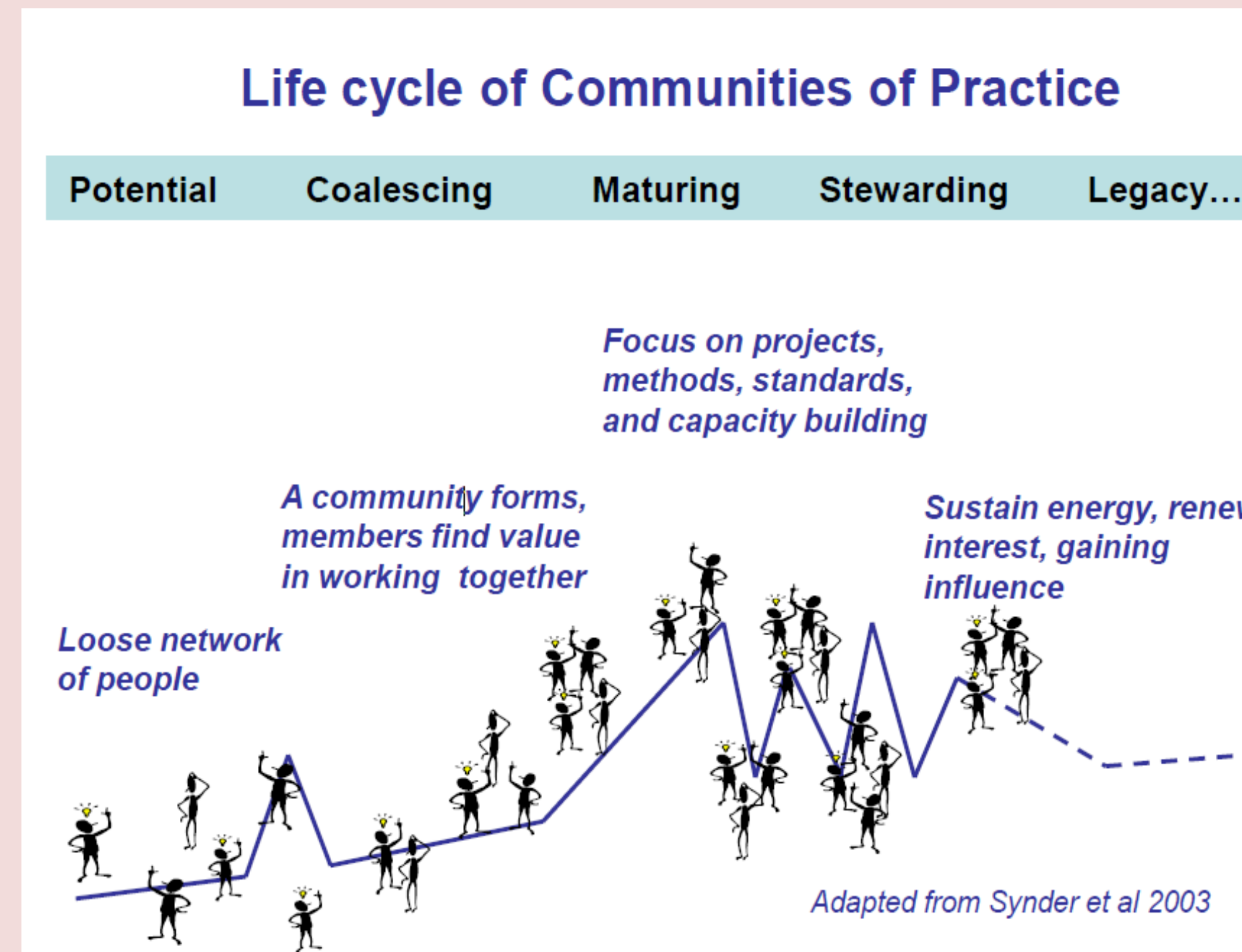
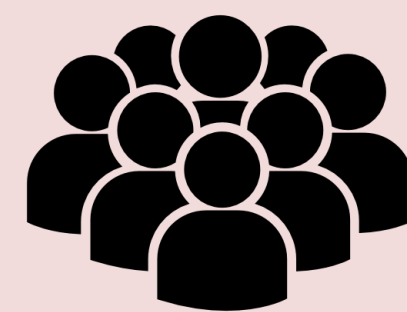


How to create a robust community?

What is a Community of Practice?

Groups of people who share a passion for something that they know how to do and who interact regularly to learn how to do it better¹

“CoPs develop around things that *matter* to people.”²



Figure^{3,4}

CIPCOH’s Community of Practice Potential

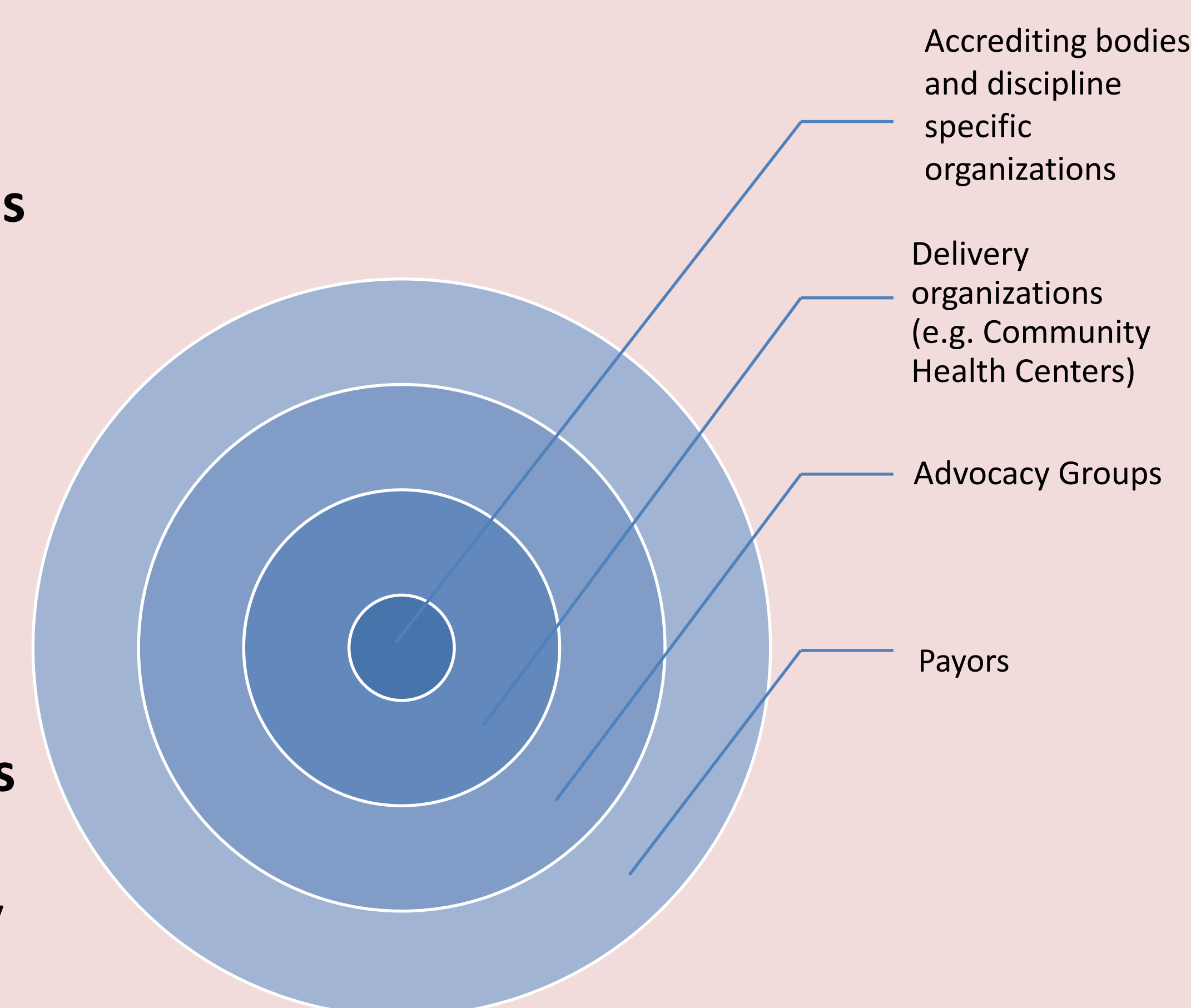
Mission: Promoting the integration of oral health and primary care training and practice, for all levels of learners, across the life span

Vision: Improved patient outcomes within the delivery of primary care

Objectives:

- To **Foster stakeholder engagement, connections and collaborations** in primary care and oral health integration and training
- To **share knowledge, exchange ideas and Implement best practices** for systems-based improvements in primary care training

Stakeholders:

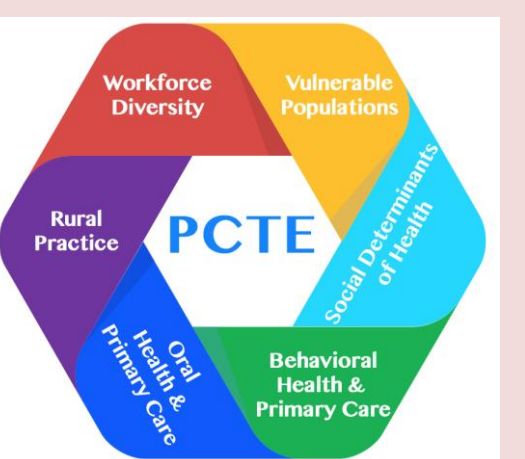


Coalescing Activities

CIPCOH launched its CoP effort by organizing a luncheon at Harvard School of Dental Medicine which included a diverse group of national and local stakeholders interested in integrating oral health and medicine.



In collaboration with the other five academic units for primary care training and enhancement (AU-PCTE), CIPCOH will organize a workshop at the Beyond Flexner Alliance 2018: Community, Diversity and Equity Conference to consolidate its growing CoP network.



Next Steps for Moving toward Maturity

- We will continue to engage our community to be active partners from the inception of our various research projects to being its consumers and champions
- CIPCOH hopes to create a system for continued growth and sustainability of our community of practice

Want to join CIPCOH’s Community of Practice?

Find us at :

<https://cipcoh.hsdm.harvard.edu> or email us at cipcoh@hsdm.harvard.edu

References

1. Wenger, E. (2002). "Cultivating communities of practice a quick start up guide."
2. Wenger, Etienne, McDermott, Richard, and Snyder, William (2002) Cultivating communities of practice: a guide to managing knowledge. Harvard Business School Press.
3. William M. Snyder, X. d. S. B. (November 2003). "Communities of Practice: A New Tool for Government Managers." IBM Center for the Business of Government.
4. Huckson, S. "Using a Community of Practice model to implement guidelines." NHMRC Australia.